


# VILLA TUGENDHAT

TRAVEL EXHIBITION



WWW.TUGENDHAT.EU  
E-MAIL: INFO@TUGENDHAT.EU  
PHONE: +420 515 511 015/016  
ČERNOPOLNÍ 45, BRNO,  
CZECH REPUBLIC

# CONTENT

Villa Tugendhat travel exhibition	3
Technical parameters	4
Exhibition visual	5
2 sizes of display panels	6
Overview of all display panels	7
Photo documentation of exhibition panels	12
Photo documentation of the installation system	13
Photo documentation of storage and transport	15
Photo documentation of 3D model 1:50	16
Contact	17

# VILLA TUGENDHAT TRAVEL EXHIBITION

Due to great interest among the professional and lay public, the Study and Documentation Centre at Villa Tugendhat prepared an exhibition about Villa Tugendhat, which presents the history of the villa from its inception to the present day. The exhibition which is intended primarily for foreign audiences is offered by the Brno City Museum in its English version (and in German and Czech version from February 2014).

The exhibition on the Tugendhat Villa is composed of 14 comprehensive topics dealing with the history of the villa in several time periods. Accompanying texts of individual "chapters" do not directly follow up on each other in their structure. The exhibition concept allows, if necessary, to divide the exhibition into several exhibition rooms, depending on the space available. Comprehensive themes also allow the use of only some part of the display panels.

Large-format photographs that are printed in the same size and format as the text panels introduce visitors to the atmosphere of the Villa Tugendhat using details of the design furniture, materials and well-known iconic parts of the house, such as the chrome column cladding in the interior or a vista through the broad windows into the villa garden.

By prior arrangement the exhibition can be complemented by an illuminated 1:50 model of the building, a photo slideshow, a lecture or a film screening of a docudrama "The Fate of Tugendhat" produced by Czech Television Consignment sale of the Study and Documentation Centre at Villa Tugendhat publications can also be arranged.

By prior arrangement, you can also arrange consignment sales of publications made by Study and Documentation Centre. If not otherwise agreed, the minimum loan of the exhibition is 14 days, maximum 3 months.

## EXHIBITION CONCEPT

Villa Tugendhat was designed for Greta and Fritz Tugendhat in 1929–1930 by German architect Ludwig Mies van der Rohe. Today, this building is considered the most important Mies' pre-war work and at the same time his most authentic surviving building in Europe. It is a unique work of art in terms of design, layout, interior equipment, technical facilities and integration into the natural environment. For the first time in the history of architecture, a steel bearing structure was used in a private house. The interiors contain rare materials – onyx from Morocco, Italian travertine, veneer of exotic Asian woods. The architect also designed the interior of the house – especially the seating furniture which now belongs among designer icons of the 20<sup>th</sup> century. The technical facilities of the villa were quite exceptional for their time – air heating and cooling, electric retractable windows, a photocell at the entrance. In 2010–2012, the building and garden underwent thorough restoration and renovation which brought it to the appearance from the time of its origin in 1930. Since March 2012, the villa is open to the public again as an installed monument of modern architecture.

## LIST OF TOPICS

TITLE	number of panels
2012 INTRODUCTION	1 ks
1830–1939 THE CITY OF BRNO	1 ks
1860–1930 GENIUS LOCI OF THE LOCALITY	2 ks
1913–1930 THE LÖW-BEERS	1 ks
1928 GRETA AND FRITZ TUGENDHAT	1 ks
1928–1930 THE FAMILY VILLA AT ČERNOPOLNÍ 45	2 ks
1930 TECHNICAL DETAILS	1 ks
1930–1938 A HOUSE SUBMERGED IN GREENERY	1 ks
1931 PHYLOSOPHY OF THE STRUCTURE	1 ks
1938–1970 WAR AND POST-WAR YEARS	2 ks
1981–1985 FIRST RENEWAL AND RECONSTRUCTION	2 ks
2001–2010 CONSTRUCTION HISTORY AND RESTORATION RESEARCH	1 ks
2010–2012 SECOND RENEWAL AND RECONSTRUCTION	2 ks
2012 THE FUTURE	5 ks
VILLA TUGENDHAT NEW PLANS	1 ks
VILLA TUGENDHAT HISTORICAL PLANS	1 ks
LARGE FORMAT PHOTOGRAPHY	6 ks
LARGE FORMAT PHOTOGRAPHY (SQUARE)	4 ks

# TECHNICAL PARAMETERS

**Due to the different spatial options of inquiring institutions, the English language version was produced in two options of two sizes:**

Option A: width 70 cm, height 150 cm

Option B: width 60 cm height 130 cm

The Czech and German versions of the exhibition are only available in option B.

**Total number of panels: 40 pcs**

Number of text panels: 26 pcs

Number of panels with large-format photographs: 6 pcs / 6 motifs

Number of panels with large-format photographs (square format): 8 pcs / 4 motifs

**All panels are stored in 2 transport crates.**

Dimensions of single crates (English exhibition): H x W x L / 100 x 54 x 174 cm

Dimensions of single crates (German and Czech exhibiton) : H x W x L / 92 x 52 x 156 cm.

One transport crate weighs ca. 80 kg

**By prior arrangement the exhibition can be complemented by an illuminated 1: 50 model of the building.**

The model is stored in a transport crate.

Dimensions of the crate: H x W x D / 70 x 85 x 115 cm

Weight ca. 60 kg

**The installation method of the exhibition:**

Exhibition panels are equipped with hinged hooks / loops on the back side designed for hanging.

Due to the thickness of the panels it is also possible to install them in free space.

The equipment for spatial installation is not included in the exhibition.

The model of Villa Tugendhat is equipped with internal lighting. An electric power socket with 230 V is needed for the lighting.

# EXHIBITION VISUAL

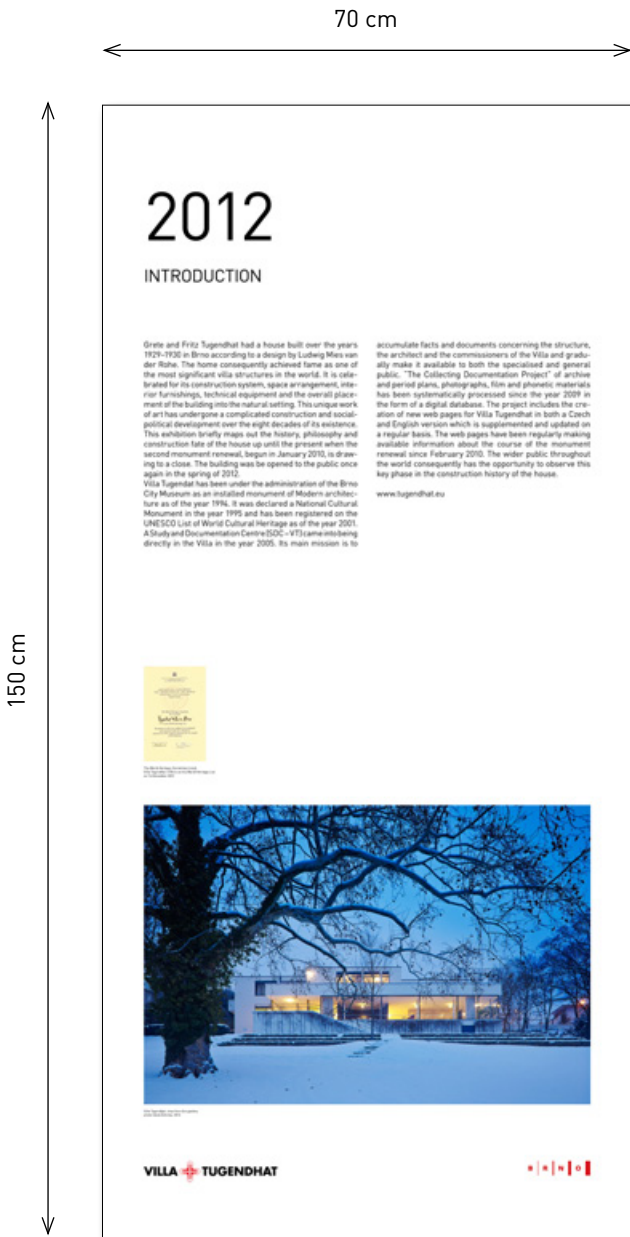


Option A



Option B

# 2 SIZES OF DISPLAY PANELS



Option A



Option B

# OVERVIEW OF ALL DISPLAY PANELS

## VILLA TUGENDHAT

1928-2013

Visual Communication: 1988-2013  
 Exhibition Design: Jiri Dvornik, Zdenek Dostal, Zdenek Svoboda, David Sedlacek  
 Translation: Zdenek Svoboda, Jiri Dvornik, Zdenek Dostal, Zdenek Svoboda, David Sedlacek  
 Photo: Jan Hlavac, Petr Hlavac, Zdenek Svoboda, Jiri Dvornik, Zdenek Dostal, Zdenek Svoboda, David Sedlacek  
 Graphic Design: Zdenek Svoboda, Jiri Dvornik, Zdenek Dostal, Zdenek Svoboda, David Sedlacek  
 Copyright: Zdenek Svoboda, Jiri Dvornik, Zdenek Dostal, Zdenek Svoboda, David Sedlacek

1

## 2012

### INTRODUCTION

Brno and Frtiz Tugendhat had a love-hate relationship. Frtiz was born in Brno, but he spent most of his life in Vienna. He was a pioneer of modern architecture in the Czech Republic and also a pioneer in the world of modern architecture. He was a pioneer of modern architecture in the Czech Republic and also a pioneer in the world of modern architecture. He was a pioneer of modern architecture in the Czech Republic and also a pioneer in the world of modern architecture.

2

## 1830-1939

### THE CITY OF BRNO

Brno was one of the most important cities in the Austro-Hungarian Empire. It was a center of industry and culture. The city was built on a hill and was surrounded by a wall. The city was built on a hill and was surrounded by a wall. The city was built on a hill and was surrounded by a wall.

3

4

## 1860-1930

### GENIUS LOCI OF THE LOCALITY

The first villa in Brno was built in the 1860s. It was a large, ornate building with a central tower. The villa was built in the 1860s and was a large, ornate building with a central tower. The villa was built in the 1860s and was a large, ornate building with a central tower.

5

## 1913-1935

### THE LOW-BEERS

The Low-Beers was a large, ornate building with a central tower. It was built in the 1910s and was a large, ornate building with a central tower. The Low-Beers was a large, ornate building with a central tower.

6

## 1928

### GRETE AND FRITZ TUGENDHAT

Grete and Fritz Tugendhat were a young couple who moved to Brno in 1928. They were a young couple who moved to Brno in 1928. They were a young couple who moved to Brno in 1928.

7

## 1928-1930

### THE FAMILY VILLA AT ČERNOPOLNÍ 45

The Family Villa at Černopolní 45 was built in 1928-1930. It was a large, ornate building with a central tower. The Family Villa at Černopolní 45 was built in 1928-1930. It was a large, ornate building with a central tower.

8

# OVERVIEW OF ALL DISPLAY PANELS





**VILLA TUGENDHAT**

9

## 1930

### TECHNICAL DETAILS

The technical equipment and finishing of the house was... Despite the fact there was still one this apartment... The house was designed for a family of four... The house was designed for a family of four... The house was designed for a family of four...




**VILLA TUGENDHAT**

10

## 1930-1938

### A HOUSE SUBMERGED IN GREENERY

The architect Maxfield Bodwell designed... The house was designed for a family of four... The house was designed for a family of four... The house was designed for a family of four...



**VILLA TUGENDHAT**

11

## 1931

### PHILOSOPHY OF THE STRUCTURE

Less than a year after the completion of the house... The house was designed for a family of four... The house was designed for a family of four... The house was designed for a family of four...



**VILLA TUGENDHAT**

12

## 1938-1970




### WAR AND POST-WAR YEARS

The family had been in the house for... The house was designed for a family of four... The house was designed for a family of four... The house was designed for a family of four...



**VILLA TUGENDHAT**

13

**VILLA TUGENDHAT**

14

## 1981-1985

### FIRST RENOVATION AND RECONSTRUCTION

The project was undertaken in the... The house was designed for a family of four... The house was designed for a family of four... The house was designed for a family of four...



**VILLA TUGENDHAT**

15





**VILLA TUGENDHAT**

16



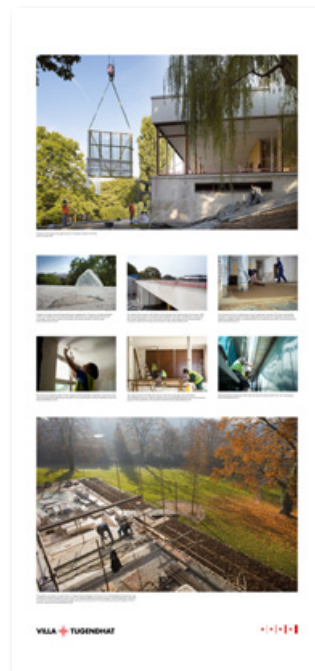
# OVERVIEW OF ALL DISPLAY PANELS



17



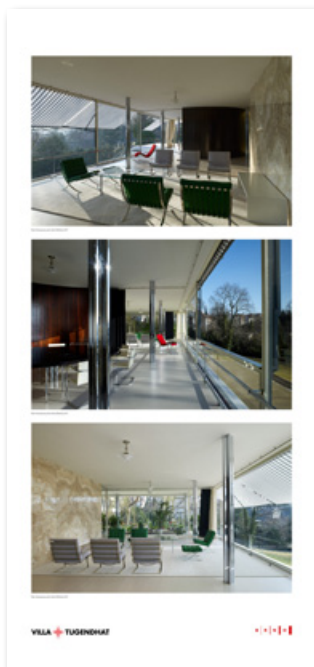
18



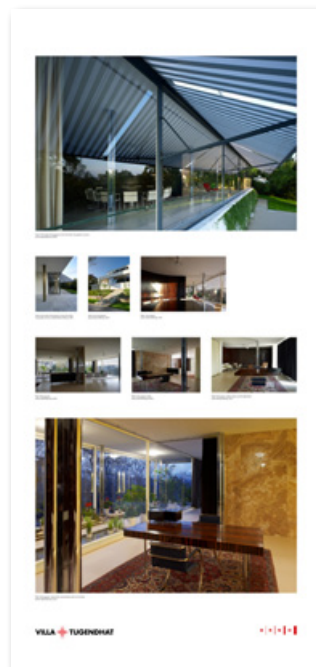
19



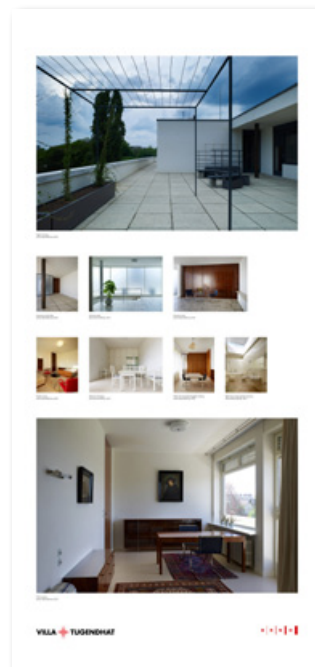
20



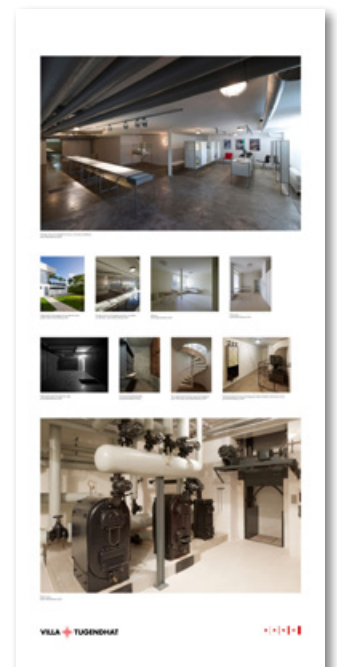
21



22

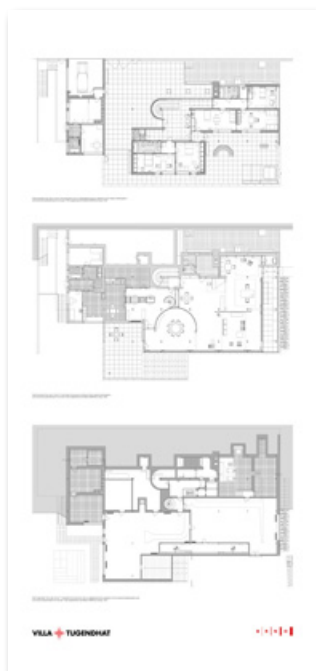


23

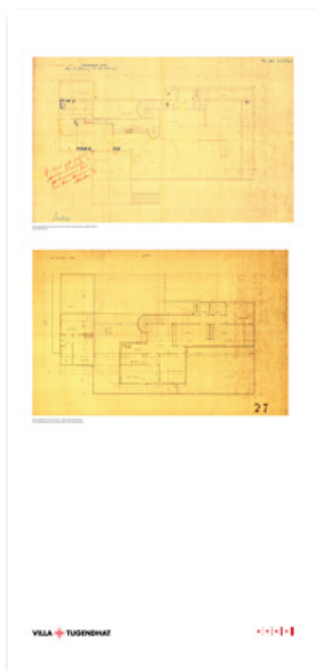


24

# OVERVIEW OF ALL DISPLAY PANELS



25



26



27



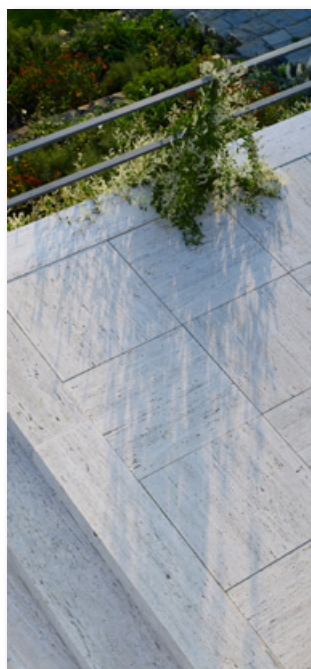
28



29



30



31



32

# OVERVIEW OF ALL DISPLAY PANELS



33

34



35

36



37

38



39

40

# PHOTO DOCUMENTATION OF EXHIBITION PANELS



# PHOTO DOCUMENTATION OF THE INSTALLATION SYSTEM



Exhibition panels are equipped with hinged hooks / loops on the back side designed for hanging.



# PHOTO DOCUMENTATION OF THE INSTALLATION SYSTEM



Connection of two panels (square panel).



# PHOTO DOCUMENTATION OF STORAGE AND TRANSPORT



# PHOTO DOCUMENTATION OF 3D MODEL 1:50





# CONTACT

Iveta Černá  
Director  
e-mail: [iveta.cerna@tugendhat.eu](mailto:iveta.cerna@tugendhat.eu)  
phone: +420 515 511 011, +420 602 357 272  
Černopolní 45, 613 00 Brno, Czech Republic  
[www.tugendhat.eu](http://www.tugendhat.eu)

Petr Dvořák  
Project manager / Public relation  
e-mail: [petr.dvorak@tugendhat.eu](mailto:petr.dvorak@tugendhat.eu)  
phone: +420 515 511 012  
Černopolní 45, 613 00 Brno, Czech Republic  
[www.tugendhat.eu](http://www.tugendhat.eu)

Brno City Museum, government-funded organisation  
Špilberk 210/1, 662 24 Brno, Czech Republic  
IČ: 00101427  
DIČ: CZ00101427